

INVERTER E PANNELLO TIPO ①

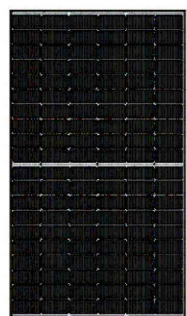
Inverter tipo Growatt o equivalente:
- 50kW
- 860x600x300mm



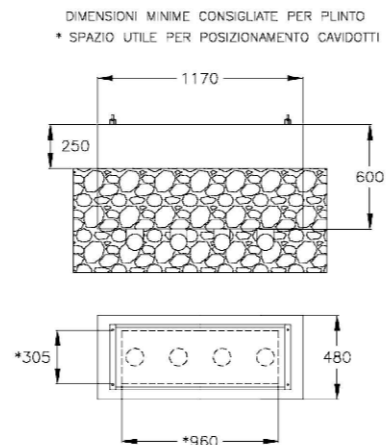
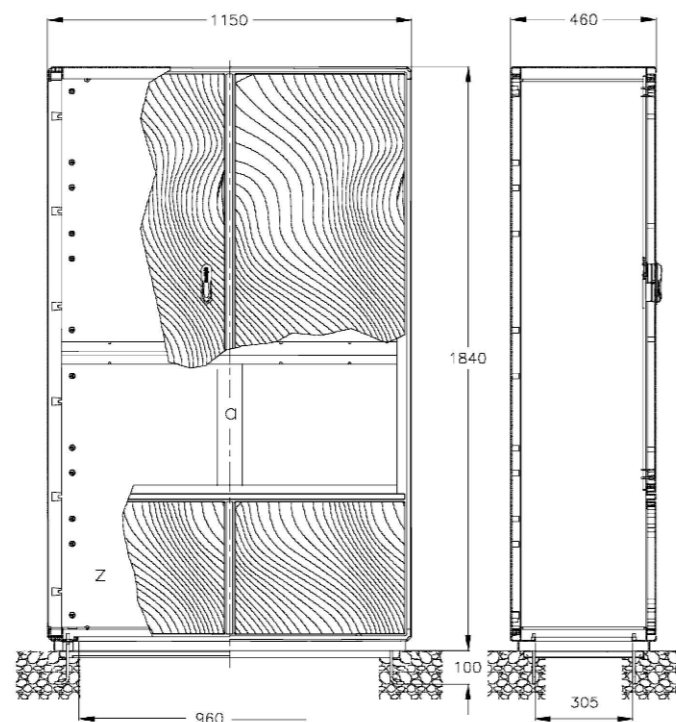
Inverter tipo Growatt o equivalente:
- 50kW
- 580x435x230mm



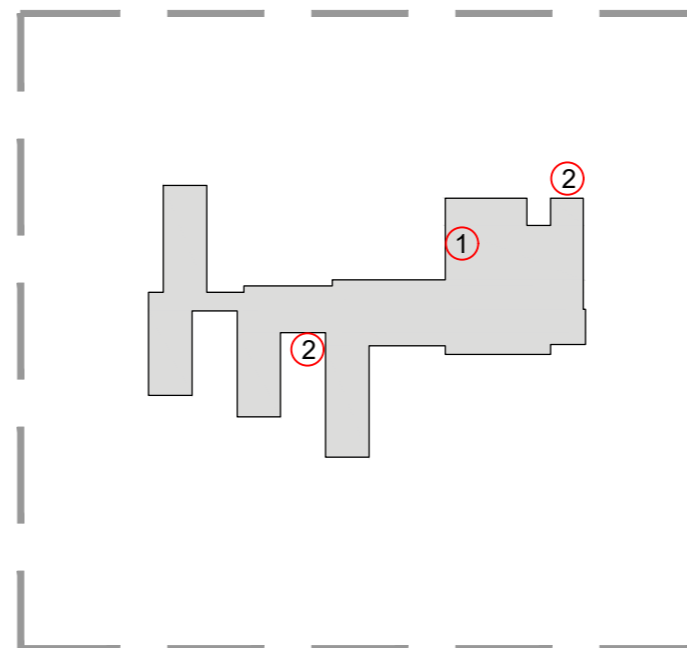
Pannello solare tipo Trinasolar o equivalente:
- 380kWp
- 1763x1040x35mm



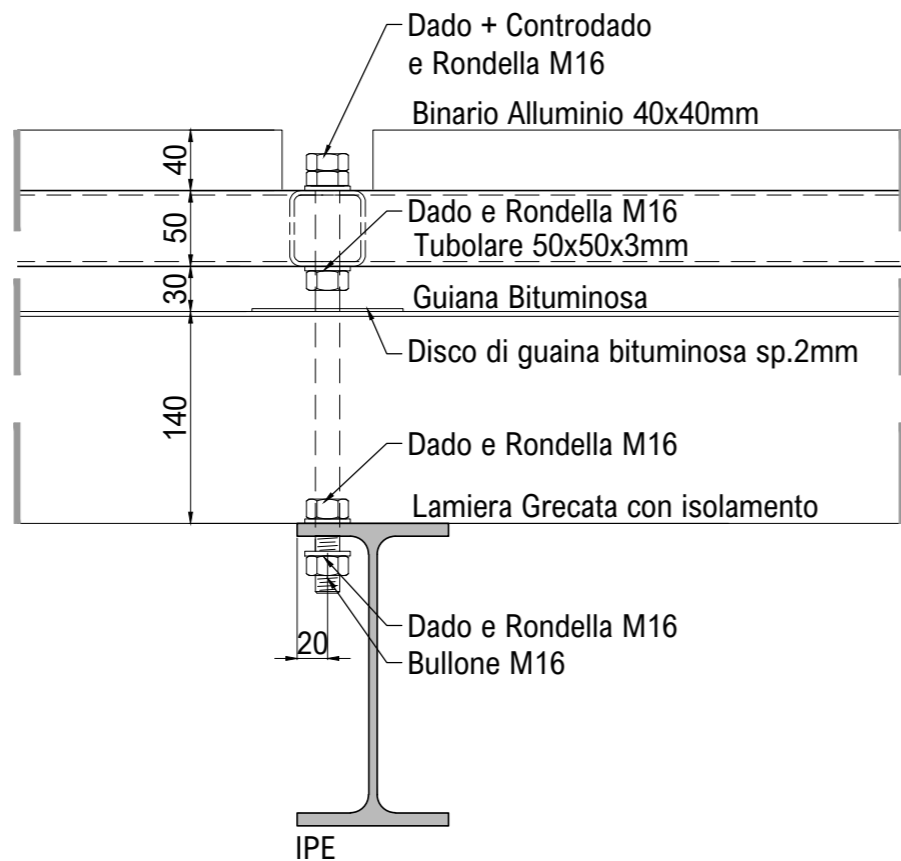
ARMADIO STADALE IN VETRORESINA IP55 TIPO CONCHIGLIA o equivalente ②



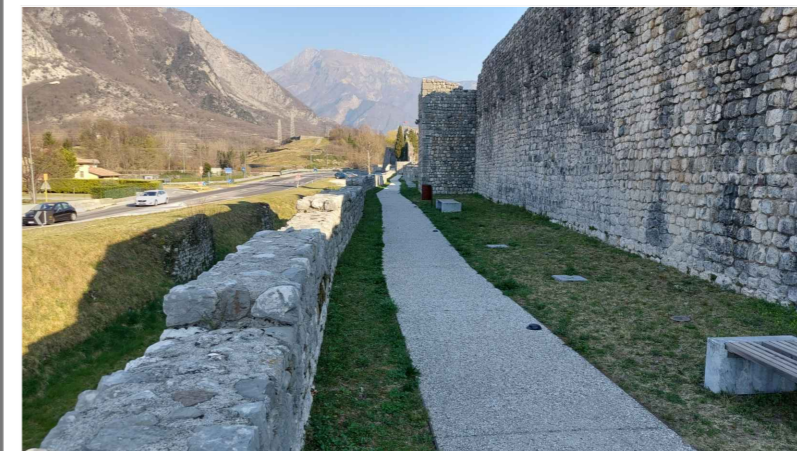
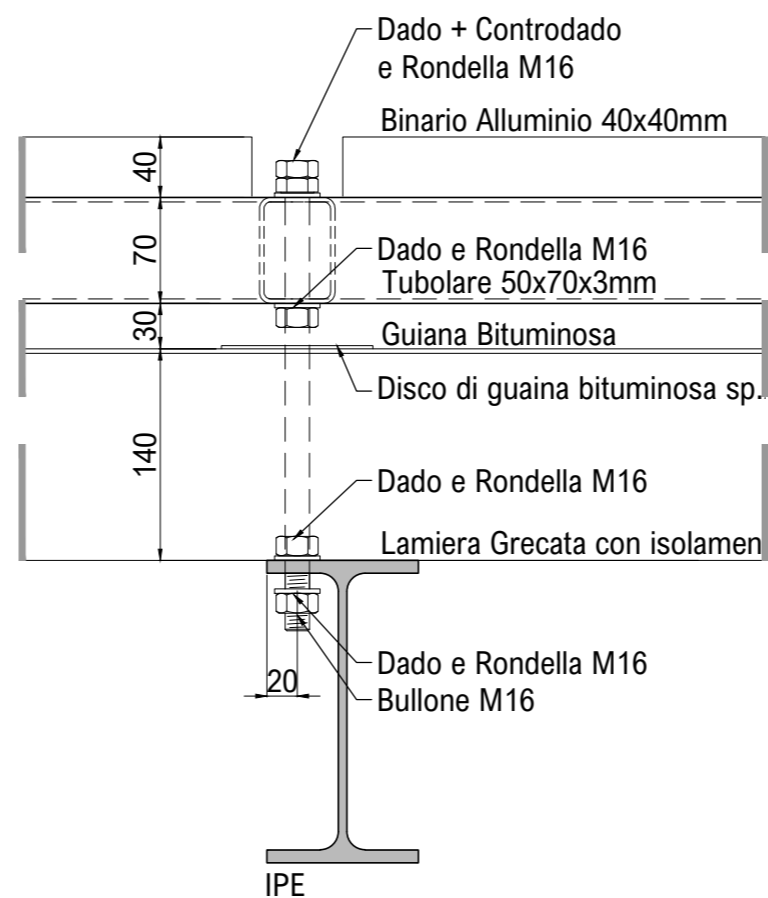
POSIZIONAMENTO



DETTAGLIO POSA IN COPERTURA: TELAIO 50x50x3mm
Scala 1:5



DETTAGLIO POSA IN COPERTURA: TELAIO 50x70x3mm
Scala 1:5



LAVORI DI RESILIENZA, VALORIZZAZIONE ED EFFICIENTAMENTO ENERGETICO DEL COMUNE DI VENZONE - LOTTO 2
CUP I44H21000020001

PROGETTO DEFINITIVO-ESECUTIVO

COMMITTENTE
Comune di Venzone
Piazza Municipio, 1
33010 - Venzone (UD)

PROGETTISTA
dott. ing. Cristiano Roselli della Rovere

TITOLO
IMPIANTO FOTOVOLTAICO
DETTAGLI

SCALA	DATA	INC	TAV	REV
1:5	22/12/2022	RA810	PE	0
REV	DATA	DESCRIZIONE	REDATTO	
0	22/12/2022	Prima emissione	F. Panzacchi	